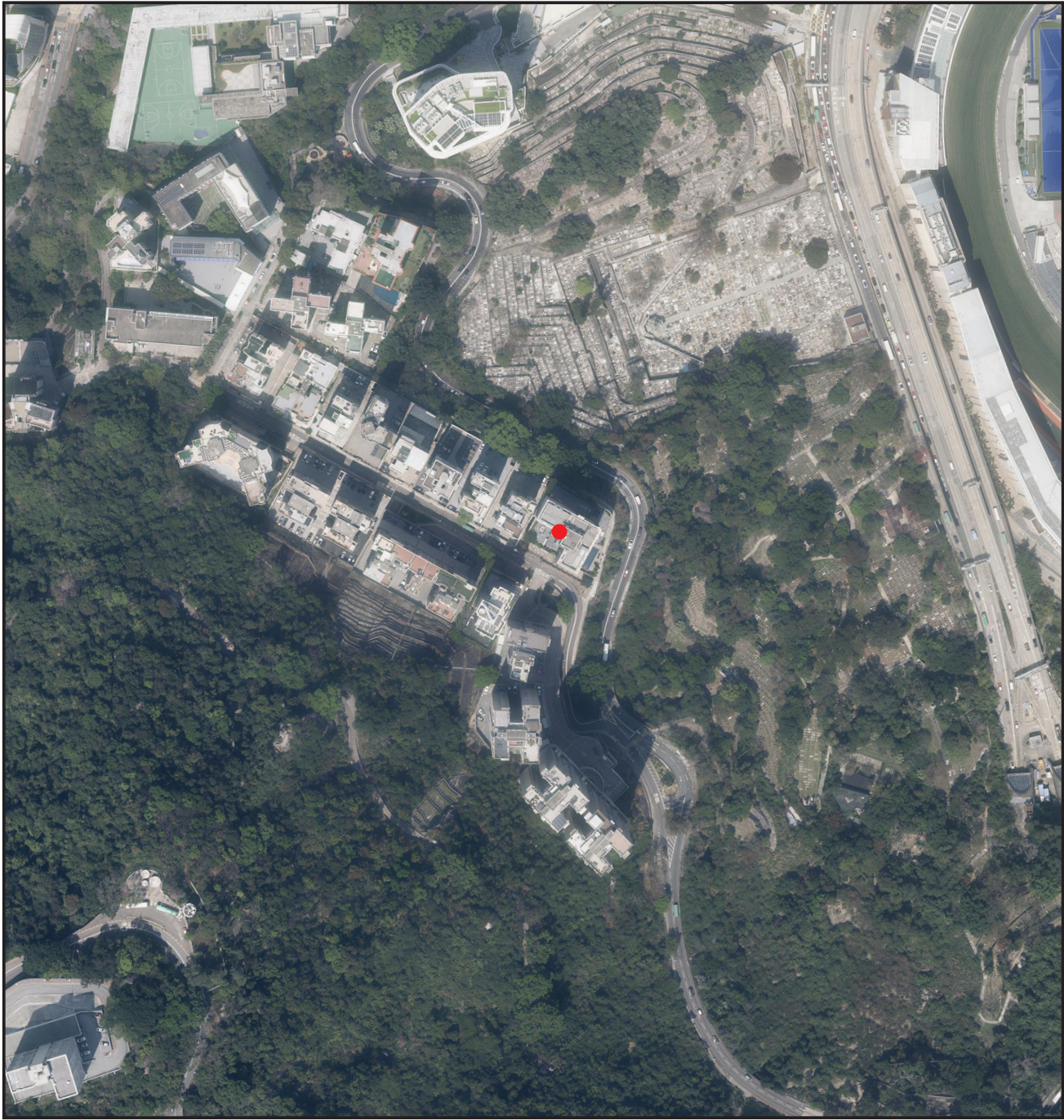


# 發展項目的鳥瞰照片

## AERIAL PHOTOGRAPH OF THE DEVELOPMENT



● 發展項目的位置 Location of the Development

The Aerial Photograph is adopted from part of aerial photograph taken by the Survey and Mapping Office of Lands Department at a flying height of 6,900 feet, photo reference number E256087C dated 22/03/2025.  
鳥瞰照片摘錄自於地政總署測繪處於2025年3月22日在6,900呎飛行高度拍攝之鳥瞰照片，編號為E256087C。

Survey and Mapping Office, Lands Department, The Government of HKSAR© Copyright reserved – reproduction by permission only  
香港特別行政區政府地政總署測繪處版權所有，未經許可，不得複製。

Explanatory remark:-  
The Aerial Photograph may show more than the area required under the Residential Properties (First-hand Sales) Ordinance (Cap.621) due to technical reason that the boundary of the Development is irregular.  
備註：  
由於發展項目的邊界不規則的技術原因，鳥瞰照片可能顯示多於《一手住宅物業銷售條例》（第621章）所要求顯示的範圍。